

ISSUE 31, August, 2021, 1300+ subscribers Archives & MORE at [www.ontheriver.org](http://www.ontheriver.org) Ken DeWalt, publisher

3000+ may view in Alva Florida Friends... <https://www.facebook.com/groups/alva.fl/> 5000+ may view in Nextdoor Alva <https://nextdoor.com/city/alva--fl/>

1000+ may view in Know Your Neighbors 239 <https://www.facebook.com/groups/757702127967077/>



# On the RIVER

*Connecting ALVA Florida NEIGHBORS and NEIGHBORHOODS*

TO SUBSCRIBE or offer articles (maximum 300-500 words), to send jpeg photos of Alva area happenings, or to contact the publisher/editor with any questions, email Ken DeWalt [kendewalt@ontheriver.org](mailto:kendewalt@ontheriver.org) . The deadline for receipt of any materials is the 15<sup>th</sup> of the month previous to the month you wish the articles to run. Issues go out before the 1<sup>st</sup> of each month, and are subject to editing if necessary.

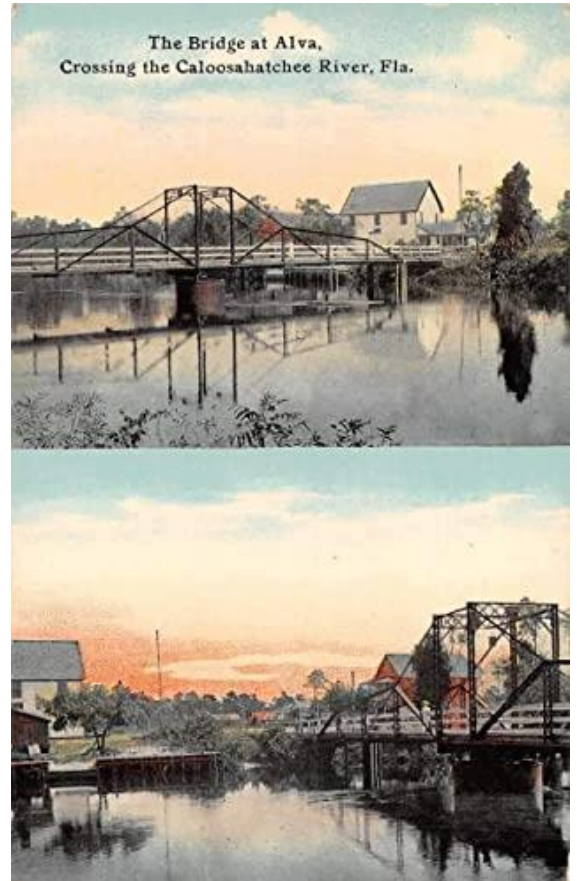
Now accepting advertisements. See our terms on the last page of this newsletter. We encourage all subscribers to consider patronizing the paid advertisers you find at the conclusion of this newsletter. Their support of our mission helps us provide you with this local Alva area newsletter.

[www.ONTHERIVER.ORG](http://www.ONTHERIVER.ORG) Archive of all OTR newsletters and lots more, all FREE including a link to [www.ALVAFL.org/newsletter](http://www.ALVAFL.org/newsletter) to see previous the Alva INC newsletters archived since 2010

PLEASE CONTACT any event sponsor promoted in the ON THE RIVER newsletter before deciding to attend to check the latest scheduling plan for dealing with the COVID-19 VIRUS PANDEMIC

## FEATURED IN THIS MONTH'S OTR:

- LOCAL Alva area news
- LOCAL history
- LOCAL Community services
- LOCAL club and organization news
- LOCAL school news
- LOCAL recipes and health tips
- Local safety information



**HELP REDUCE BLUE-GREEN ALGAE  
AND BE FERTILIZE SMART**

**IT'S THE LAW IN LEE COUNTY June 1 through September 30, 2021**

***<http://www.fertilizesmart.com/>***

Lee County is asking people to stop using many common fertilizers from June 1 to October 30. If you use fertilizer during that time, you could receive a citation.

**Not all fertilizers** are banned during the blackout period. Only those with Nitrogen and Phosphorous.

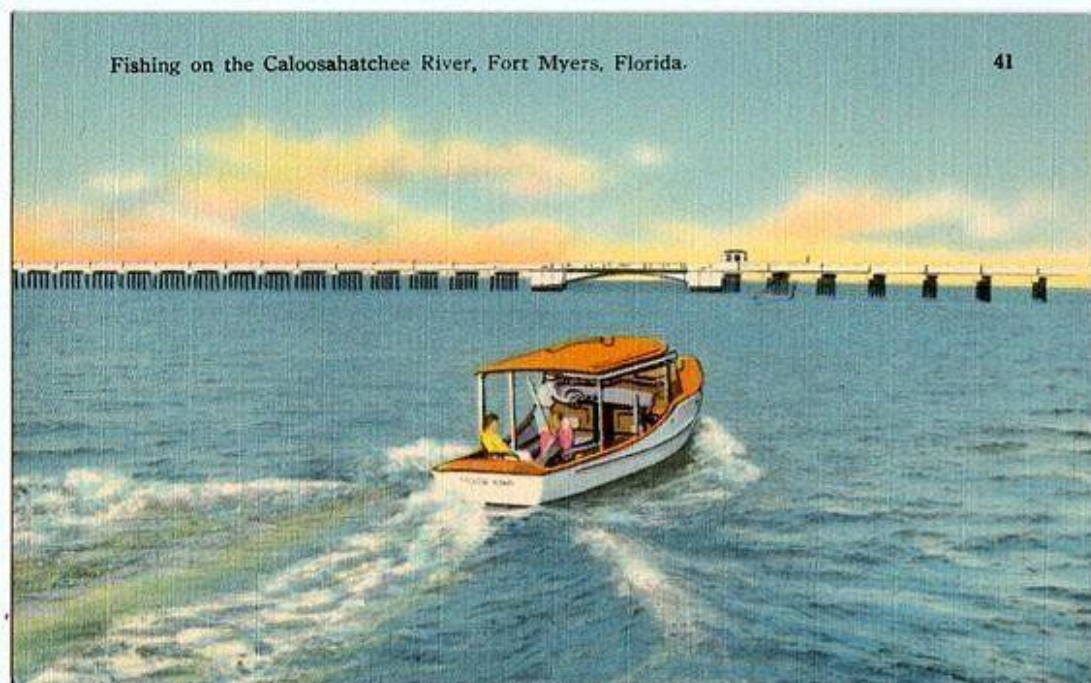
We can still use fertilizers containing other minor packages which are beneficial to plants and turf but cause no issues with the waterways during this time of the year.

Doing your part to preserve our water quality is as simple as doing less yardwork! During the rainy summer season, unnecessary fertilizing and improper fertilizer application can result in runoff that sends nutrients meant to feed your lawn into our waterways where they feed harmful aquatic algae instead.

**JUNE 1 TO SEPTEMBER 30 - Lee County Ordinance 08-08**

Take a break from using phosphorus and nitrogen formulas and minimize your fertilizer use to help protect our waterways, our quality of life and our economy.

---



# How Much Dangerous Algae Toxin is in the Air?

(TY News Press & Calusa Waterkeepers)



It's not a good idea to swim in water tainted with toxic blue-green algae, but is it dangerous to live and breathe along an algae-choked water body? Are fishing guides at risk? A local water quality group is stepping up to do what the government doesn't.

Calusa Waterkeeper is checking the air for cyanotoxins, produced by microscopic organisms that photosynthesize as plants do, but are indeed bacteria, even though they're commonly called blue-green algae. Some produce potent toxins that have been linked to grave health problems, including liver cancer and neurodegenerative diseases like Parkinson's.

The nonprofit has created a first-of-its-kind sniffing device that can test the air around blooms for toxins. That DIY ethic has come to characterize the group, which operates on a slim budget, but packs a board with hefty scientific firepower.

Members collaborated with each other, picking the brains of other algae researchers to engineer and build the portable toxin sensor, dubbed ADAM for Aerosol Detector for (Harmful) Algae Monitoring.

With a price tag of less than \$600, ADAM looks like a cross between a trumpet case and a high-end cooler and a with twin latches and a recessed carrying handle. Nestled inside each unit (there are two so far) is a battery-driven air pump, tubing, bottles, gauges and more that attach to a fold-up pole that extends to a head-high (about 5 feet) "breathing zone" from which air is collected, then sent for testing. Wyoming's Brain Chemistry Labs will donate the analysis, which would otherwise be prohibitively pricey. Eventually, the results will appear on the nonprofit's website.

"This is leading edge," said scientist and board member, Manuel Aparicio, who led the project to develop the device. "People are starting to look at all aspects of (health risks of cyanotoxins)," he says, and a critical first step is knowing how much is in the air. "So, we're trying to be as sober and objective as possible, because there aren't any health standards yet," Aparicio said. "The intention is to measure not just for advocacy, but to get it out to the public."

Science is still learning about cyanotoxins, with research ongoing in many quarters. Some of what is known isn't reassuring, Calusa Waterkeeper John Cassani says, especially about inhaled toxins. Even though airborne toxins occur at a much lower concentration than in water at the source of a bloom, inhalation increases their potency.



"It's more bioactive – like 10 times more bioactive," Cassani said, "because it goes straight to your blood-stream when you inhale it," unmediated by digestion. For reasons both legal and scientific, Cassani says his organization will be careful not to frame the results as recommendations or advice. "It

would be up to you to make an interpretation. The minute we say something is risky or dangerous, then we're subject to all kinds of problems.”

But bit by bit, scientists from a variety of agencies, institutions and nonprofits are piecing together what Brain Chemistry Labs has dubbed the toxic puzzle.

Some of what we've learned so far:

-As blooms intensify, people breathe in more toxins, scientists at Fort Pierce's Florida Atlantic University's Harbor Branch Oceanographic Institute found during 2018's intense blooms.

-Algae toxins can reach deep into the lungs, with easy access to the bloodstream, Florida Gulf Coast University research showed. And they can travel far from the initial blooms, landing miles inland, FGCU research also demonstrated.



-A toxin produced by some blue-green algae is connected to Lou Gehrig's disease, according to Brain Chemistry Labs research, though an amino acid may protect against its ravages.

-People living in areas with significant blue-green algae blooms are more likely to die from nonalcoholic liver disease than those who don't. Florida's Treasure Coast makes up one striking cluster with a high rate of both blooms and deaths, a 2017 Ohio State University study found, the only such cluster in Florida.

-Yet despite mounting evidence that cyanobacterial emissions are a genuine problem, Florida government agencies so far haven't ventured to answer some of those concerns. That leaves citizens in the dark on what's in the air and what the risks might be, hence the need to empower people with knowledge, Cassani says.

-It's an effort U.S. Rep. Byron Donalds of Naples, who's advocated for more research into harmful algal blooms, supports. The first bill the freshman congressman introduced was to keep algae watchdogs working even during government shutdowns, and he's advocated for public/nonprofit partnership efforts.



-“Unfortunately, there isn't enough information on the long-term impact of these blooms, but we are witnessing the immediate adverse effects on our environment and community in real-time,” Donalds wrote in an email. “I am thankful that there is more interest in these blooms and the toxins they produce, and I support efforts to assess this issue and spread awareness. It is exciting to see the government and nonprofit organizations take a multi-faceted approach to this critical issue.”

# Army Corps selects preferred alternative for future Lake Okeechobee releases but environmental advocates disagree

(TY News Press)



Col. Andrew Kelly of the U.S. Army Corps of Engineers announced a preferred alternative for future Lake Okeechobee releases. Kelly said that what's known as alternative CC is now the preferred model and will likely be the final choice for the future regulation of the lake.

Called the Lake Okeechobee System Operational Manual, or LOSOM, this set of regulations will guide the future of lake releases and dictate what amount of water is sent where and when. Col. Andrew Kelly of the U.S. Army Corps of Engineers

announced Monday a preferred alternative for future Lake Okeechobee releases, and environmental advocates say the news isn't good for the Caloosahatchee River and residents of Southwest Florida. Kelly said during a press conference that what's known as alternative CC is now the preferred model and will likely be the final choice for the future regulation of the lake.

"We walked through our analysis and our decision to move forward preliminarily with the preferred alternative of CC, and what I basically explained in that decision was as you look at that information and working for a couple of plus years with all the stakeholders, (it) helped us define the matrix that we compared and made this choice, as we looked at CC it scored in the top three in 10 of the 11 criteria. So from our perspective it represents the best alternative."

By the way: Everglades restoration efforts get boost with new pump station in Picayune. Previously: Water managers are considering new Lake O release plans. One would be bad for the Caloosahatchee River. Called the Lake Okeechobee System Operational Manual, or LOSOM, this set of regulations will guide the future of lake releases and dictate what amount of water is sent where and when.

Lake Okeechobee is the liquid heart of what's left of the historic Everglades, and water from the lake can either spare the Caloosahatchee River from harmful conditions or blast the estuary 15 miles into the Gulf of Mexico. Kelly said LOSOM will be in place for close to 10 years.

The next phase will include improvements to the CC alternative to help with high flows for the Caloosahatchee River. A draft environmental impact statement will be finished by February, and a final decision is expected by November 2022. The CC plan sends the most amount of water to the Caloosahatchee River in the summer months, when blue-green algae blooms are most common on Lake Okeechobee.

"We looked at the Caloosahatchee and the St. Lucie two different ways," Kelly said. "We looked at the environment and ecology and what's called an algal bloom risk metric and quite simply is really just a total volume of water in the summer months when Lake Okeechobee could have algae present. It does not perform well for algal blooms and releases for the Caloosahatchee River."

Blue-green algae on Lake Okeechobee can be seen in this aerial image taken on May 3, 2021. Southwest Florida environmental groups for the most part were not happy with the decision.

Calusa Waterkeeper John Cassani, who has long said the river has long received less attention than other parts of the system, said the plan will send more water to the river and estuary when we need it least. "That's kind of the way it looks, but I don't think they're done with CC yet," Cassani said. "But it doesn't look terribly encouraging. It doesn't look great for the Caloosahatchee and it doesn't look great for Okeechobee. No one should see this as a silver bullet."

Cassani said the Everglades system is tapped out in terms of water permits and the amount of water that's already been allocated by the state. "The environment doesn't bode well during these exercises," he said. "It's a frustrating policy because the resource is not going to fare as well as agriculture, which has almost optimal conditions for flood control and water supply."



Perspectives from environmental groups varied as the CC alternative will help nearly every area of the system but the Caloosahatchee. "The Everglades Foundation (based in the Miami area) is delighted with the Army Corps' decision to recommend alternative CC as the preliminary preferred alternative for the Lake Okeechobee System Operating Manual," said Stephen Davis, with the Everglades Foundation. "Although this plan still needs to be optimized to deliver more water south to the Everglades during the dry season, alternative CC is the ideal starting point to a more balanced and fair management of the public's water."

Kelly said the CC alternative works well for the Caloosahatchee River during dry conditions and when flows are at more average rates. Once the flows get high, though, the Caloosahatchee River is basically turned into a flood plain, a drainage basin for one of most massive agriculture networks in the nation.

"It needs water from the lake in the dry season and CC does a really good job of that and it likes water in the optimal zone as much as possible and CC does that. And with the total volume of water in the algae season it does less well," Kelly said when asked how this plan shared adversity for the Caloosahatchee River and Southwest Florida.

Julio Fuentes, president of the Florida State Hispanic Chamber of Commerce, said the Army Corps should work to balance CC for flood control, water supply and conservation. "The U.S. Army Corps of Engineers' selection of alternative CC has the potential to change the water management of South Florida for years to come, but the success or failure of it depends on the details," Fuentes said in an email. "The water supply for more than 6 million people in South Florida, among them many of the one in four Hispanic-owned business in the state, is at stake. The Corps says it intends to, in its language, optimize alternative CC in the coming weeks before the public comment period ends. We hope the Corps sticks to the project purposes Congress authorized — navigation, flood control, water supply and fish and wildlife preservation — and acts in a way that benefits South Florida's water supply in a balanced manner."

Other environmental advocates on the east coast said the alternative is better for the overall system but not necessarily for the Caloosahatchee River.

“While we’re encouraged by the Army Corps’ selection of Plan CC, the new Lake O playbook won’t be successful unless it’s optimized to bring necessary relief to the Caloosahatchee Estuary — without sending additional water to the St. Lucie,” said Eve Samples, director of Friends of the Everglades. “This can be accomplished by sending additional clean water south during the dry season, rather than stockpiling it in the lake for irrigation of large corporate sugarcane growers south of Lake Okeechobee.”



Samples said the Army Corps should better consider recent algal blooms that have crippled the Southwest Florida economy. “Let’s not forget the toxic-algae blooms that plagued Florida’s coasts in 2018, threatening public health and crippling local economies,” Samples said. “The new LOSOM plan is an opportunity to avert such disasters in the future. Plan CC puts us on the right path — but the Army Corps and state water managers still have work to do. We’ve got to get this right.”

Kelly said the CC alternative still needs work, and that he hopes the agency will be able to tweak the regulations to better help the Caloosahatchee during high flow periods when algae blooms are present on Lake Okeechobee. “What it doesn’t necessarily perform well in is with the high flows and now the stakeholders are talking more about the high flow areas and how to deal with that in the optimization,” Kelly said. “Clearly from the Caloosahatchee side of the house, they’re laser beam focused on not only the lower and optimal range but also the high flows.”

Many water advocates on the west coast have criticized the CC plan because it sends the most lake water to the Caloosahatchee out of the five alternatives that were considered.

“We’ve got another iteration of modeling to go and what we’re looking for is suggestions for optimizing,” Kelly said. “Up until now we’ve done hundreds of thousands of modeling runs and we’ve seen the interactions of different choices in performance and the alternative CC kind of performs the best in the terms of balance and totality across the board.”

---



## Lee County needs bus drivers; diploma requirement waived

The School District of Lee County is in need of bus drivers for the approaching school year and has immediate openings.

If you're still working on your GED or diploma, you've got time: That requirement is waived until the end of February 2022. The hourly rate starts at \$14.69 and you will receive a training stipend after driving for 45 days.

Go to the SDLC website's career page to apply.

## Lee County making up for teacher shortage with training program



Lee County is hiring more teachers through a program called Alternative Lee, an alternate route to getting professionally certified as an educator. Through this program, anyone with a degree, no matter what the focus, can become a professional teacher. Alternative Lee simplifies the process by allowing these new teachers the chance to meet state requirements through job-embedded tasks designed to support their effectiveness in the classroom. The district offers the program free to qualifying teachers who, in turn, agree to teach in Lee County for three years after graduating.

SDLC says it offers this program to help combat turnover and support its new teachers, since the first two to four years are critical to making teachers both successful in the classroom and satisfied with their choice of career. New teachers are typically the most vulnerable group within the profession.

"If teachers are looking to come to our district, please, please, please—if they have not gone through the college of education, if they don't have an education background, if they're preparing for professional educational testing and qualification—this is the course that they need to be in," said Devarsious McCants, an educator and graduate of Alternative Lee who works at Lehigh Acres Middle School.

Visit The School District of Lee County's website career page for opportunities.



## Gas skimmers on rise in Lee County, data shows

(TY Wink News)

Since January, investigators have found skimmers at eight gas stations across Lee County. At four of the gas stations, the devices were found more than once. Six of the locations

are 7-Elevens.

In the last five years, the Florida Department of Agriculture reported the number of skimmers is growing in Southwest Florida. In 2015, skimmers were found at just four gas stations. In 2020, that number grew to 22.

“Skimmers are an easy way for bad guys to make money and make money fast,” said Carrie Kerskie, a cybersecurity specialist. “Also, skimmers have been evolving and improving over the years.”

“Now they’re getting smaller and smaller, and they have Bluetooth capabilities so a lot of times the bad guys don’t even have to come back to retrieve them,” she added. Most skimmers found locally are in Lee County.

In 2020, they found 32 skimmers at 16 Lee County gas stations, up from 12 skimmers at six stations in the year before. Seven of the 16 gas stations hit in 2020 were also 7-Elevens.

Kerskie said that could be because of their many locations and their popularity. “We see a lot of them being on gas stations near exits near interstates, you know, quick and easy, on and off, because they notice where people are going to be fueling up,” Kerskie said.

But the Department of Agriculture’s data also shows most of the gas stations with the skimmers had security. “If they’re making a lot of money at something, they’re going to find a way around it,” Kerskie said.

Some 7-Elevens are corporate-owned, others are franchises. Corporate did not respond to a request for comment and local owners of 7-Eleven could not be reached.

The best advice when you fill up at any gas station is to not use any pump that isn’t in the cashier’s line of sight. Those are the ones crooks target because they have a better chance of putting in a skimmer without being seen, Kerskie said.



We appreciate your consideration and any gift you give us to help have a successful league is GREATLY APPRECIATED! If you would like to pay by check or cash, please see a board member or fill out the available form from the following link: <http://alvababeruth.website.siplay.com/Site/More/Documents>

If you would like to pay by credit card, please click the button below, which will take you to a log-in screen to enter our store and purchase the sponsorship level you so desire. A board member will follow up with you to verify the information to be placed on banner, website, and/or jersey (based upon sponsorship level)



**Caloosa Humane Society**

**Caloosa Humane Center 1200 Pratt Blvd, LaBelle**

SHELTER (863) 675-0997 CLINIC (863) 675-7387  
info@caloosahumanesociety.org

<https://caloosahumanesociety.org/>

**OUR MISSION**

**The Mission of Caloosa Humane Society is to serve, shelter, and protect the homeless pets in our care. We are dedicated to finding permanent and loving adoptive homes for our companion animals in need. Our no-kill facility provides low cost spay/neuter services to the community with the goal of reducing the extreme overpopulation of unwanted pets.**



**ALVA INC**

Join us to learn what's happening, and how

you may be a part of what's happening as Lee County Grows eastward toward our country haven. [www.ALVAFL.org](http://www.ALVAFL.org)

Contact Emily Smith, treasurer, at [emilyrsmith@msn.com](mailto:emilyrsmith@msn.com) to join.

**NEXT MEETING: TBA** Second Tuesdays, 7pm, Alva Community Center  
Dues are only \$25.00 a year



**BABCOCK RANCH ECO TOURS, Museum and Gator Shack Restaurant**

Go to website to reserve tours

<https://babcockranchecotours.com/>



## COMMUNITY COOPERATIVE

HOW YOU CAN HELP: **DONATE** so that we can continue purchasing food to distribute at our Mobile Pantries. **HOST A FOOD DRIVE** and collect non-perishable food items to stock our shelves. **VOLUNTEER** in the Community Cafe, at a Mobile Pantry, or as a Meals on Wheels Driver. Call (239) 332-7687



# Riverdale High School Band Boosters

Diane Doden  
President

Shannon Walter Golden  
Director of Bands

Jodi Giff  
Vice President

Ashley Smith  
Secretary

Amy Martin  
Treasurer

Date: July 20, 2021

To: Friends, Community Members and Music Education Supporters

From: Riverdale Band Booster Club, Inc.  
501(c)(3) Non-Profit Fed Tax ID # 23-7095527

Greetings,

We would like to thank you for your interest and support of our Riverdale High School Marching Band. We are a non-profit 501(c)(3) organization, whose goal is to support the band program by seeking donations, financial support, and volunteers from individuals, businesses, and community organizations. Your support provides opportunities for students to have an enriching education beyond what local schools are able to provide. Students and their families participate in car washes, sales, concessions, and parades. Students sacrifice their free time because they believe in, and receive benefits from, being involved in their school music activities. They learn mental discipline, cooperation, responsibility, time management, leadership skills, and self-motivation — life-skills that allow success in their academics as well as success after graduation.

Under the direction of Band Director Shannon W. Golden, our Marching Band has grown tremendously, from a handful of musicians in 2016, to *over one hundred members* in 2021. They enjoy and have rightfully earned the respect of being a totally dynamic Marching Band. The Marching Band represents the beating Garnet and Gold heart of Riverdale High School and the community.

Of course all this takes money. We need your help! Funds are needed for instrument purchase and repair, purchase of music, uniform cleaning, travel expenses, extra instructors and staff, color guard flags and show props, competition registration fees, and other band expenses. In the recent past, "The Raider" Marching Band marched and performed at Disney World and Universal Studios in Orlando. This dream could never have been fulfilled without the generosity and support of you, our community leaders and friends. This upcoming school year (2021-22) promises to be even bigger and better. The band has been given an opportunity to perform this school year at Walt Disney's, 50th Anniversary Magic Kingdom Parade and Universal Studios' Main Parade in Orlando, among other exciting performances!

- **Bronze Sponsorship** \$100.00-\$249.99  
Your logo or name will appear on a banner at every home football game.
- **Silver Sponsorship** \$250.00-\$499.99  
Your 1'x1' logo or name will be displayed on our equipment trailer and it also will appear on a banner at every home football game.
- **Gold Sponsorship** \$500.00-\$999.99  
Your 1'x1' logo or name will be displayed on our equipment trailer and it also will also appear on a banner at every home football game. In addition we will also provide you with a plaque to be proudly displayed at your business.
- **Platinum Sponsorship** \$1000.00+  
Your 2'x2' logo or name and contact information will appear on the back of our equipment trailer. Your Logo will be displayed at every home football game. In addition you will receive a plaque to be proudly displayed at your business. In addition your business will be advertised on our Facebook page.

The following are events where you, as our sponsor, can expect to see your business promoted:

- All RHS football games, both home and away
- Walt Disney World, Magic Kingdom, Orlando
- Universal Studios, Orlando
- The Edison Festival of Light Parade, Ft Myers
- The Edison Festival of Light Junior Parade, Ft Myers
- Swamp Cabbage Festival Parade, LaBelle
- Saint Patrick's Day Parade, Naples

We are extremely grateful for support in *any* amount.

Please make checks payable to: **RBBC** (or, if you prefer, Riverdale Band Booster Club) and mail to Riverdale High School, Band Booster Club, 2600 Buckingham Road, Fort Myers, FL 33905. Receipts are available, upon request.

Musically,

Shannon Walter Golden  
Director of Bands

Raiderbandnews@gmail.com  
**Follow us on Facebook:** *Riverdale.Raiders.Band*



## **Join the Nation ... Thank a Vietnam Veteran!**

*Please join USS Hannah Chapter, NSDAR, a Commemorative Partner in the United States of America 50th Vietnam War Commemoration, in Honoring our Vietnam Veterans! USS Hannah Chapter will be holding a pinning ceremony January or February 2022 in Labelle, Florida to honor our Vietnam Veterans.*

*We are actively searching for Vietnam Veterans who have served in our United States Military between November 1, 1955 through May 15, 1975 regardless of service location.*

*If you know of a Veteran, or a surviving Spouse, who served during the above dates, please contact Cathy Lowe, Service for Veterans Chairman*



***USS Hannah Chapter, NSDAR.***

***Cathy Lowe: [cathy\\_lowe69@yahoo.com](mailto:cathy_lowe69@yahoo.com)***

**All names must be submitted by October 1, 2021**

**USS Hannah Chapter, Alva, Florida**

USS Hannah Chapter, NSDAR is not a part of, or endorsed by, the Department of Defense



## Fight summer hunger in our community.

Hunger doesn't take a summer break. Thousands of Lee County children face food insecurity year-round and summer can be the hardest time of year for many of the families we serve.

Learn how you can help Community Cooperative fight summer hunger and keep our neighbors in need and their children fed during the summer months.

## SCORE Southwest Florida

3650 Colonial Blvd, Fort Myers, FL 33966, (239) 931-9807, [swflscore@gmail.com](mailto:swflscore@gmail.com)

If you are dreaming of starting your own business, or needing to grow your current business, the local 40 plus SCORE volunteers and personal certified mentors are waiting for your call or email. And remember, our services are completely FREE. We volunteer to serve so YOU can succeed.

SCORE is a fully independent private 501-3C non-profit with accountability to and some funding from the SBA

**SCORE Mentors...**with experience in virtually every business category you can imagine help with:

- Business plan development, sales and marketing strategies
- Financing, taxes and E-commerce
- Management, administrative and operational procedures
- Ongoing advice to help your decision making

### Life-Long Learning Made Easy

SCORE mentors, sponsors and local business owners with a specific areas of expertise conduct a variety of very popular, regularly scheduled, low-cost and free educational seminars and online workshops for establishing and managing a successful small business.

### Free Resources

With access to a wide variety of documents, templates and tools to assist you in starting or growing your business, the information provided here covers a wide range of subjects including initial business planning, capital sources, government agencies, and much more.



## JOB-LINK

[https://expertjobmatch.com/cro/reg/goodwill?origin=bing-ads-search&type=cpc&msclkid=3e1c1e87bb021e31b6f5415c3d06719e&utm\\_source=bing&utm\\_medium=cpc&utm\\_campaign=Company%20%7C%20Retail%20-%20Clothing%20%7C%20Goodwill&utm\\_term=%2Bjobs%20%2Bat%20%2BGoodwill&utm\\_content=Jobs%20%7C%20BMM](https://expertjobmatch.com/cro/reg/goodwill?origin=bing-ads-search&type=cpc&msclkid=3e1c1e87bb021e31b6f5415c3d06719e&utm_source=bing&utm_medium=cpc&utm_campaign=Company%20%7C%20Retail%20-%20Clothing%20%7C%20Goodwill&utm_term=%2Bjobs%20%2Bat%20%2BGoodwill&utm_content=Jobs%20%7C%20BMM)



**Give TIME. Give MONEY. Give FOOD.**

To make a donation, call (239) 334-7007 or visit



[www.harrychapinfoodbank.org](http://www.harrychapinfoodbank.org).

---

## Ft Myers Camera Club

<http://www.ftmyercc.com/>

Please NOTE: Our 2020-2021 meetings will be held virtually via Zoom until further notice. We welcome non-members to join a Zoom meeting and encourage prospective members to join FMCC. Please contact Carol Heffernan to request a Zoom invitation. [carolheff28@gmail.com](mailto:carolheff28@gmail.com)



Our last meeting will be for Image of the Year on April 9, 2021 and we won't meet this summer (due to covid). Plans are to either Zoom or be in person starting again in October.

---

## Charleston Park Neighborhood Association



2541 Charleston Park Drive, Alva, FL 33920. 239-728-8895  
[Charlestonpark1926@gmail.com](mailto:Charlestonpark1926@gmail.com)

Community Center Activities & Training, Lee County Children's and youth sport park, Events throughout the year, Meetings for all every second Monday of the month at 6pm at the Community Center are also available virtually via ZOOM.

---

That one, dad



He called me a gecko

## Here's where Lee County students can get free meals this summer

(TY TV 7)

The School District of Lee County has partnered with Florida's Summer BreakSpot program to help keep children fed while school is out for the summer.



The program allows the school district's Food and Nutrition Services Department to provide free meals to children 18 and younger at no cost during summer break.

Meals will be served at over 75 locations in Lee County between school-based and community sites between June 21 and July 28.

There are no income requirements or registration, officials said. "The School District of Lee County has partnered with the Summer Feeding Program for over twenty years. Providing summer meals to the students when school is not in session is an important service that we are able to provide," said Food and Nutrition Services Director Kandy Messenger.

**To find a Summer BreakSpot and serving times call 211, text 'FoodFL' to 877-877 or visit [www.SummerBreakSpot.org](http://www.SummerBreakSpot.org).**

---

### A NEW FREE service to Southwest Florida residents!

(Mileage is charged outside of Lee County)

## MANGO AWAY!

Let us schedule a time to come to your home and remove fruits from the tree you do not want at our own risk, free of charge in the lee county area. Outside of lee county we charge a travel fee. We do not remove fruit that has fallen on the ground.



- :Removal of mangos
- :Removal of star fruits
- :Removal of citrus fruits

We do not remove the tree!  
Fruit only



**BOOK US NOW!**  
**CALL MATT**  
**917-701-8395**





# A bit of ALVA History

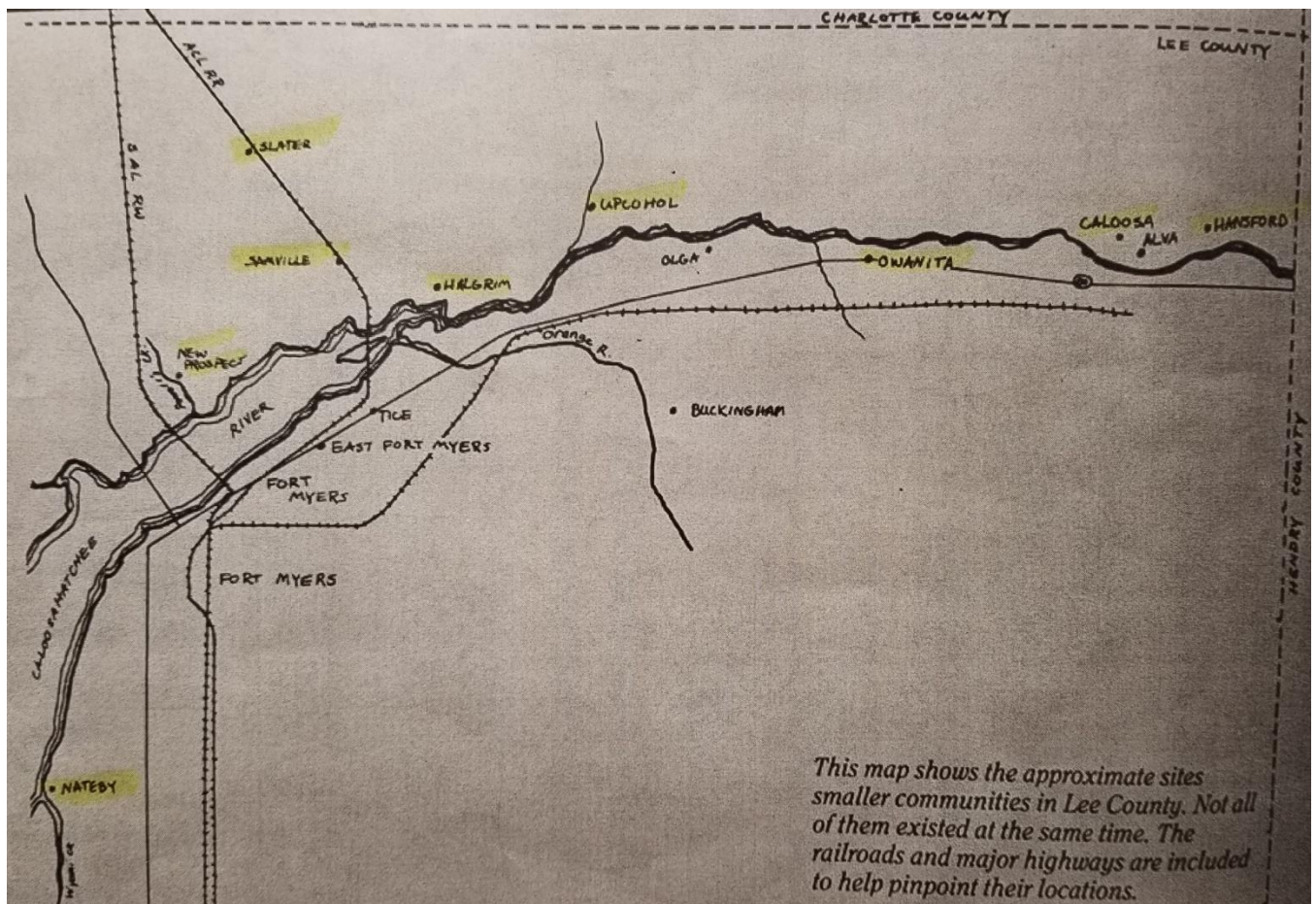
## Did you know?

- Alva Village was once bordered on east and west by two other communities, Caloosa and Handford? --
- Anyone with information on what happened to these communities please email me those details and/or photos for a later update to this issue?

## Yes, Alva had...

-A railroad primarily for commercial packing house use but also for passengers...maybe in boxcars, but they could ride. The segregated black community of Charleston Park on the south side of the river had the railroad run right through it, though its hard to find on any maps.

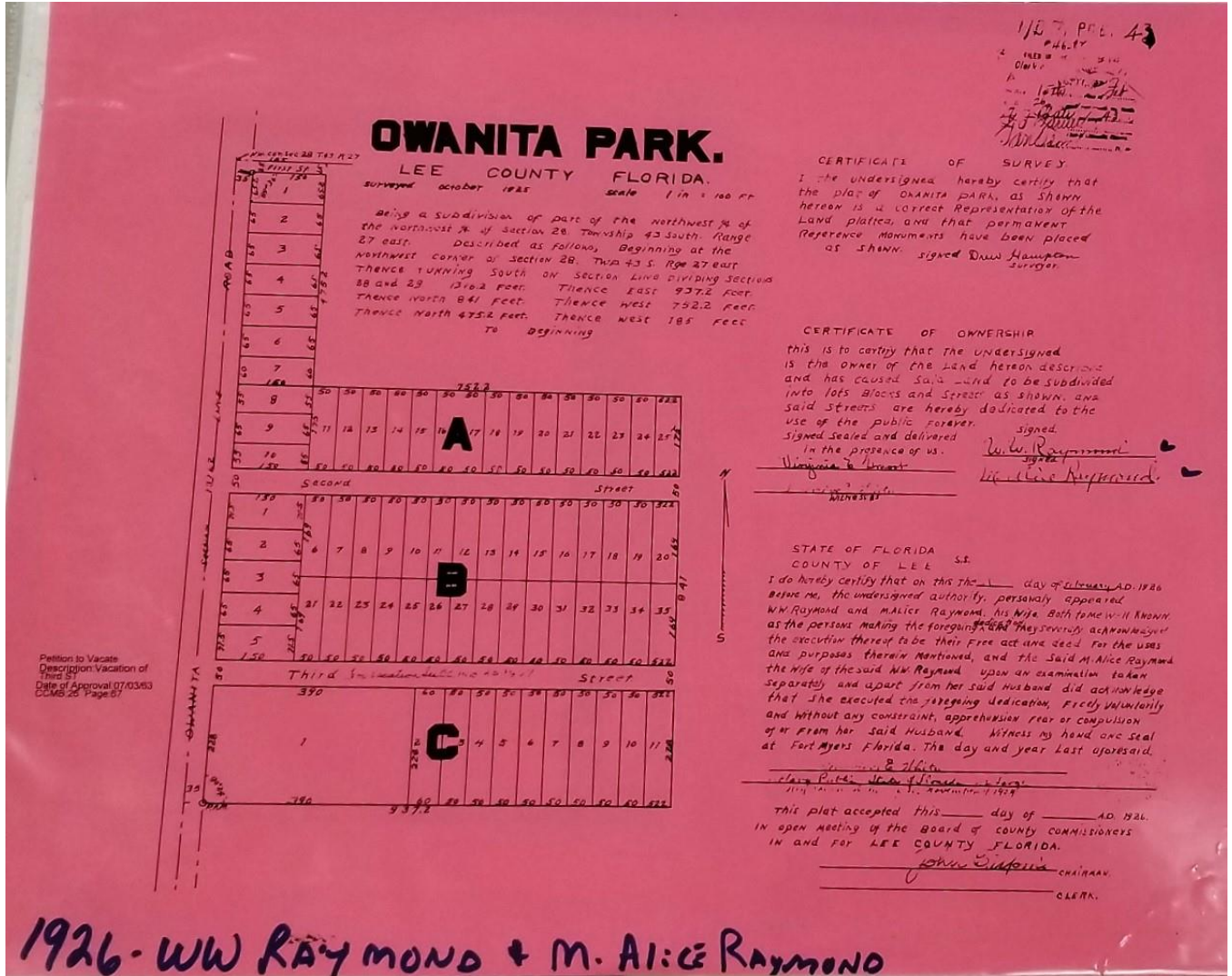
-Please let me know if you can find any maps before 1970 that show the 1920's-built community of Charleston Park.



(TY Joanne Iwinski Miller for this map)

# When OWANITA was a gleam in the dreamers' eyes

(TY Joanne Iwinski Miller)



1926 - W.W. Raymond + M. Alice Raymond

Broadway Street, Alva, looking to the river from the school built in 1914

(TY Joanne Iwinski Miller)



The global farm is not only a hands-on training ground for those searching for help in tropical agriculture, but also an educational tool to make the public aware of hunger related issues and the answers there are to alleviate malnutrition and starvation.



17391 Durrance Road, North Fort Myers,  
FL 33917 | 239.543.3246 |  
[info@echonet.org](mailto:info@echonet.org)  
<https://www.echonet.org>



There are six fenced-in "Dog Parks" which allow for off-leash play. On-leash dog walking is allowed at many locations (listed below).  
Dogs must be accompanied by an adult and must remain on-leash at all times while walking in the park. Find out more at: <https://www.leegov.com/parks/dog-parks>



**Six Mile Cypress Slough, Lee County Park**

7751 Penzance Boulevard, Fort Myers, FL. 33966

A mile of wonder 30 minutes away from Alva.



**Manatee Park**  
**10901 Palm Beach Blvd,**  
**Fort Myers, FL 33905**  
**239 690 5030**



## **Olga Community Park**

2325 S Olga Dr, Fort Myers, FL 33905

(239) 533-7275



## **Hickey's Creek Mitigation Park**

17980 Palm Beach Blvd, Alva, FL, 33920

-Great for quiet creek kayaking. -Fun for walks and picnics.



## **ALVA BOAT RAMP PARK**

21580 Pearl St,

Alva, FL 33920



---

## **W.P. Franklin Lock & Dam South Recreation Area**



**Franklin Lock Rd. , Alva , FL 33920. Contact: (239) 694-2582**

WP Franklin South Recreation Area is a day use area located on the Caloosahatchee River adjacent to the WP Franklin Lock and Dam. Visitors can watch boats traversing the 152 mile Okeechobee Waterway

---

## **W.P Franklin Lock & Dam CAMPGROUND**

**Camp by reservation only**

17850 NORTH FRANKLIN LOCK ROAD, ALVA, FL 33920, 239-694-8770

<https://www.recreation.gov/camping/campgrounds/233661>





## Alva Community Center PARK

21471 North River Road, Alva, FL 33920 , (239) 728-2882

**Shady lawns & baseball field**



## Telegraph Creek: Unspoiled kayak trail worth discovering

(TY Florida Rambler)

Telegraph Creek, a tributary of the Caloosahatchee River located between LaBelle and Fort Myers, is all the things I love about kayaking destinations – out-of-the-way, uncrowded, scenic, quiet and full of wildlife.



## Caloosahatchee Regional Park



19130 North River Road, Alva, FL 33920 (239) 694-0398

EMAIL: [leeparks@leegov.com](mailto:leeparks@leegov.com)

**Shelter rentals, primitive tent camping, Horse and bike trails.**



## NORTH FORT MYERS Recreation Park

**2000 North Recreation Park Way, North Fort Myers,  
FL 33903,**

**This park features an 18 hole Disc Golf course , call  
(239) 297-8916**

**Veterans Park Recreation Center  
55 Homestead Road South, Lehigh  
Acres, FL 33936**



**ALVA FIRE CONTROL & RESCUE  
SERVICE**

**2660 Styles Road, Alva, Florida 33920**

**(239) 728-2223**

**Thank a first Responder every time  
you see them.**



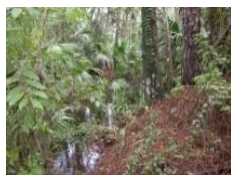
Lee County Conservation 20/20 manages over 50 preserves spread throughout Lee County, including within the boundaries of most cities. These preserves combined total nearly 30,000 acres.

Preserves are open daily during daylight hours. Access may be limited at certain locations due to temporary flooding, special restoration projects, or isolated location. Information about each Conservation 20/20 preserve can be accessed from the website:

<http://www.leegov.com/conservation2020/preserves>



*Bob Janes Preserve*



*Daniel's Preserve at Spanish Creek*



*Carter's Lane*



*Buckingham Trails Preserve*



*Olga Shores Preserve*



*Aerial View of Oak Hammock Preserve*



*Alva Scrub Preserve*



*Telegraph Creek Preserve*



**Fort Myers MEALS ON WHEELS now serves**



**homebounds of any age and for any short or long term need in the ALVA area!**

*Newest area 20-20 site, Oak hammock*

**VOLUNTEER FOR MEALS ON WHEELS**  
WWW.COMMUNITYCOOPERATIVE.COM

To become a volunteer driver/deliverer to clients, or to become a client receiver of meals and other services, please contact:

**239) 332-7687**

### How to properly wear a face mask

Check that face masks:

1. Cover your nose and mouth
2. Are secure under the chin
3. Fit snugly to avoid gaps on the sides

children'shealth?

### PLEASE WEAR A MASK & STOP THE SPREAD

<p>Before putting on a mask, clean hands with alcohol-based hand rub or soap and water.</p>	<p>Cover mouth and nose with mask and make sure there are no gaps between your face and the mask.</p>
<p>Replace the mask with a new one as soon as it is damp and do not re-use single-use masks.</p>	<p>To remove the mask: remove it from behind (do not touch the front of mask); discard immediately in a closed bin; clean hands with alcohol-based hand rub or soap and water.</p>

Source: World Health Organization



*Southwest Florida Cooking by*

*MAGGIE McMann*

*of Oak Park, Alva*

Contact Maggie to find out more at: [Maggi1m@att.net](mailto:Maggi1m@att.net)

## **SWFL OLD FASHIONED TOMATO PIE**

### **Crust:**

2 c flour, 2 tsp sugar, 1 tsp salt, 2/3 c vegetable oil, 3 T whole milk

### **Filling:**

1/2 c shredded Parmesan Cheese, 6 tomatoes, peeled, seeded and chopped. (Roma, Better Boy or Heirloom are great), Fresh snipped chives, 6 Sliced green onions, Salt/pepper to taste, 1 c Hellman's mayo, 1 1/2 c shredded whole mozzarella, 1 c shredded cheddar cheese,

Preheat oven to 350.

Grease a pie pan and then mix the pie crust ingredients and pat them into the pan with your hands, going up the sides of the pan and onto the brim.

Bake until done, about 25-30 min.

Remove from oven and immediately sprinkle on the Parmesan cheese.

Layer the tomatoes with the chives and sliced green onions. Sprinkle generously with salt and pepper.

Combine the mayo and the mozzarella and cheddar together and spread over tomatoes. Sprinkle a few chives and onions across top for decoration.

Place on a foil lined cookie sheet. I line the pie with a pie crust protector or you can crimp foil around edges so they don't burn.

Bake 40 min or until lightly browned.

Enjoy!







**Calusa Waterkeeper is a non-profit organization dedicated to the protection of the Caloosahatchee River & Estuary in Southwest Florida.**

**Join Our Team!  
Become a Certified**



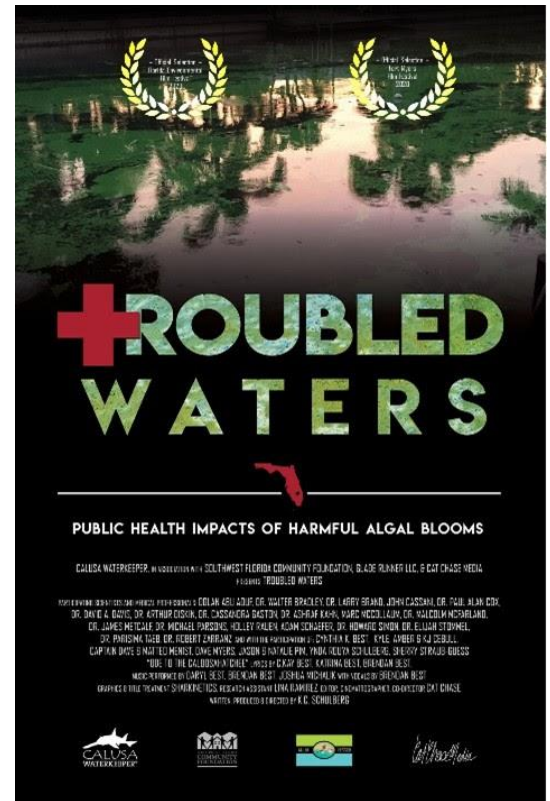
**Ranger**

Participants should have access to area waters by boat or paddle craft. No prior experience needed. Classes held at the Calusa Nature Center, Iona House. [info@calusawaterkeeper.org](mailto:info@calusawaterkeeper.org) 239) 784-0880

NEXT CLASS: Saturday, Oct. 16, 2021 9am – 11:30am

**Calusa Waterkeeper is pleased to make available its 2019 documentary “Troubled Waters: The Public Health Impacts of Harmful Algae Blooms” for free to the public!**

**During the height of the 2018 Blue-Green Algae and Red Tide HAB crises in Southwest Florida, Calusa Waterkeeper met and interviewed many of the nation’s leading research scientists studying HABs, but also doctors and nurses on the front lines and patients who had suffered harm. The result was a compelling, current, informative and entertaining 40-minute documentary conveying much needed information on potential risk – particularly on the aerosolized transmission of particles from HABs and the increased danger that poses to public health.**



**GO TO:**

**<https://calusawaterkeeper.org/troubled-waters/>**

---

*Alva Angel's*

**Giving back to the families of our community**



Are you cleaning out your house and planning to donate the items you no longer want? Please consider donating those items to Alva Angel's. We can pickup small and large items and we will gift those items to people in need or sell the items to raise money for the upcoming holiday season to purchase wish list items.

**Facebook Page: <https://www.facebook.com/AlvaAngelsOrganization>**

---



*Since 1964*

**Your RIVERDALE  
LIBRARY**

**Location: 2421 Buckingham Road,  
Fort Myers, FL**



***A REMODEL is coming!***

Our library in the northeast county will undergo a complete renovation, including creating new spaces for adults, teens and children. Commissioners approved the design contracts for the planned \$2.5 million renovation of the branch library in Buckingham. The county bought that building a couple of years ago and will make improvements that track some of the current trends in library usage.

Riverdale library, which serves much of the northeast county, will see improvements that have become commonplace in modern library design, such as designated areas for teens and, separately, for younger children. Newer libraries, such as facilities built over the past five years in Bonita Springs and North Fort Myers, as well as a major renovation to the Lakes Library, have adapted to giving different types of users their own space.

"That's a trend we have been working toward," said Library Director Mindi Simon. The children's section of old is being replaced by more age-driven spaces for teens and younger children aimed at their particular needs and desires in library services.

---



## **South Florida Wildlands Association**

is a non-profit organization dedicated to the protection of wildlife and habitat in the Greater Everglades.

SFWA is a 501c3 non-profit dedicated solely to protecting what remains of one of our planet's most unique natural areas. Diverse animals such as Florida panthers, wood storks, snail kites, manatees, corals, sea turtles, American crocodiles, and Florida black bears benefit from the many campaigns SFWA carries out. Relying on science, law, and public advocacy, SFWA works to protect habitat on public and private lands alike, while preserving clean water and quality of life for South Florida's human population.

**And guess what... Alva is located in the 'greater' Everglades.**

**<https://www.southfloridawild.org/>**



### **The ALVA MUSEUM**

Originally a public library built in 1909, it now serves as a museum of artifacts from the original settlers of Alva and is maintained by the members of the Alva Garden Club.

The museum is now closed for the summer and will reopen on October 2nd but you can see a virtual video tour at: <http://alvafilmuseum.com> (click on Virtual Tour).

Please feel free to visit the lovely landscaped grounds at any time! For information about the Alva Garden Club, see: <http://alvagardenclub.org/>

# ALVA Garden Club NEWS



## Mulching Your Landscape

No matter how large or small your yard is, you want your plants to have the best chance of becoming the best they can be, so you will need to use mulch appropriately. This leads to my topic that has been a work in progress for me as a new Floridian from the North. What type of mulch and how much to use, and how often to replenish it has all been trial and error for me.

The curb appeal of your home is one factor that mulching will quickly improve, along with the health of your carefully chosen plants around your yard. The enhanced planting bed aesthetics is what most gardeners enjoy after doing the work required.

Some of the benefits of mulch are that it suppresses weeds, slows evaporation, insulates the soil, prevents soil compaction, and slows water runoff and soil erosion. Not only does mulch keep soil nutrients from being washed away with rain, but it can release nutrients into the soil, as long as you are using an organic material. This happens as the organic material slowly decomposes on top of the soil. The mulch also traps existing water in the soil from evaporating.

Mulching can be just as effective for weed control as herbicides. The depth of all organic mulches should be 2-3 inches. This depth effectively controls weeds without causing damage to the plants. The one place that you don't want to heavily mulch is near tree trunks or woody bushes to avoid pests and disease from damaging your tree bark.

The first question when you begin to think about mulch is what kind do I buy? The choices are surprisingly numerous. One of the more common types is Pine Bark, which comes in ground or nugget form. This type comes in a rich brown color. There is also mixed hardwood mulch that comes in varied colors such as red, black, or grey to add interest to your landscape. This comes from scrap lumber, recycled pallets or tree stems too small for manufacturing. There is also Pine Needle/Straw mulch which gives a very natural look and will not wash away in heavy rains as the needles knit together. This type is the least expensive but needs to be replaced more often as it breaks down and settles quickly.

Utility mulch is given away for free by many utility companies but comes with weeds and seeds and other undesirables. This may not be a good choice for flower or vegetable gardens. It also breaks down quickly and creates more work than some of the other choices.

Cypress mulch is composed of both bark and wood. It is often harvested from Florida wetlands and may be made from leftover lumber harvest or from whole trees. These wetlands are endangered and Cypress mulch is not recommended in the Florida-Friendly Landscaping Program due to its questionable origins.

Eucalyptus mulch is considered an eco-friendly type of mulch which is grown on plantations in South and Central Florida. Trees there are grown specifically for mulch, they grow quickly and are considered

a renewable resource. This type of mulch is slightly less durable than cypress or pine bark and will need to be replenished more often.

Inorganic mulch choices are gravel, pebbles, and rubber pellets. These don't contribute to the soil's nutrients or water holding capabilities. A woven ground cloth should be installed prior to using these to keep them from sinking into the soil. They last a long time but need to be cleared of debris to look good. These materials also are not recommended near plants as they create ground temperatures too high for surface roots to survive.

Rubber pellets are made from recycled tires and are not recommended by the University of Florida/IFAS. There is also concern about the toxic chemicals that can leach into the ground as it decomposes.

The last type of mulch that I will include and is what I have adopted into my landscape and am pleased with the looks and performance is Melaleuca mulch which is made from exotic invasive trees. It gives the same traditional look as pine or cypress mulch and is aesthetically pleasing. The product is cured at high temperatures to kill any seeds so they won't germinate in your garden. It settles very slowly and in one study by UF/IFAS, it outperformed pine bark and cypress mulch in durability. Its other redeeming qualities are that it is termite resistant, and is the least desirable to termites of all the other organic mulches studied, according to a study done at the University of Florida.



It also stays put as the fibers "knit" together and it doesn't float. This is important to me as I have created a border planting bed near the water on my property and in the event of high water levels, hopefully my mulch will stay put. Another name you may see for this type of mulch is Tea Tree Mulch, which is derived from the wood and bark of the Melaleuca tree.



In conclusion, whatever type of mulch you decide on, your yard will benefit from it and will look better for it. We all need to decide what works best for ourselves in making our landscapes pleasing and satisfying. Happy Gardening!



*The Mulch Brand I use*

Although the Alva Library and Museum is closed for the summer, please consider a visit to the gardens to see the entire landscaped grounds maintained by the members of the Alva Garden Club. The Club takes a break from meetings during the summer but will resume in October. See the club's website for further information: <http://alvagardenclub.org>.

Submitted by: Jackie Hamblett, Recording Secretary

References used in this article are:

[www.dailycommercial.com/article/20160130/opinion/301309982](http://www.dailycommercial.com/article/20160130/opinion/301309982)

<https://edis.ifas.ufl.edu/publication/EP523>

<https://gardeningolutions.ifas.ufl.edu/care/planting/mulch.html>

<https://edis.ifas.ufl.edu/publication/fr052>

<https://www.gardeningknowhow.com/garden-how-to/mulch/using-tea-tree-mulch.htm>



## BE AWARE OF SMARTPHONE APP FRAUD

While Smartphone companies work diligently to review new applications, even their best efforts have allowed fraudulent applications to be made available. In a recent Washington Post review, reporters indicated that roughly 2 percent of the 1,000 most popular iPhone applications were fraudulent or infected. Apple reportedly claimed to prevent over \$1.5 billion in fraudulent transactions, however, market research shows that despite such efforts, app users have been defrauded out of approximately \$48 million.

These corrupt applications may be in the form of seemingly fun games, apps for trustworthy name-brand corporations, browsers or news applications. Some applications will steal personal information, will charge you for downloading the app, force you to purchase antivirus software that you do not need, etc. One app that was exposed charged customers \$4.99 per week, to read QR codes...something that your phone can do for free.

The issue has grown to the point that the Better Business Bureau has issued multiple alerts. It is not always possible to visually detect fraudulent apps. However, a large number of them have misspellings, improperly placed spaces or use similar, but not identical, corporate logos that appear familiar to us.

If a game or application gains significant popularity, one can expect to see similar, corrupt applications suddenly appear hoping to deceive consumers. Before downloading an app, carefully check the name. Try to find reviews for that specific application. Popular apps should have millions of downloads. Check the number of times that specific app has been downloaded.

Prior to download, read the description of the app. If it is poorly written, contains grammatical errors and/or misspelled words, you are likely dealing with a fraudulent app.

Visit the Federal Trade Commission's website at [reportfraud.ftc.gov](http://reportfraud.ftc.gov) to report fraudulent apps.

2021 Alva High School Reunion  
All Classes are Welcome



**Registration Deadline Drawing Near**  
Deadline is **August 1.**

Saturday, August 14, 2021  
2:00-8:00 PM

Buckingham Community Center  
4940 Buckingham Road, Ft. Myers, FL

If you plan to attend please complete the registration form found under the **ANNOUNCEMENTS** tab on this Facebook page.  
or by emailing Nancy Harris Serzan at  
**nanserzan@gmail.com**  
to request a registration form.

In celebration of the 50th anniversary of the  
**Class of 1971**

In addition to the Saturday night activities, members of the  
*Class of 1971*

will gather on Friday evening August 13, at the  
Boathouse Tiki Bar & Grill,  
17101 State Road 31, Ft. Myers,  
for an evening of renewing friendships, reminiscing, laughing and having fun.

Grace UMC, Fort Myers  
Shores  
Second Saturday Free Meal  
& Food Pantry, 9-11am  
239-205-3123

## Alva Area FOOD PANTRIES

St. Vincent DePaul RC  
Our Lady's Cupboard Food Pantry  
Breakfast cereal and canned fruit continue to be  
needed in Our Lady's Cupboard Food Pantry. Call  
(239) 694-3985 for hours open.

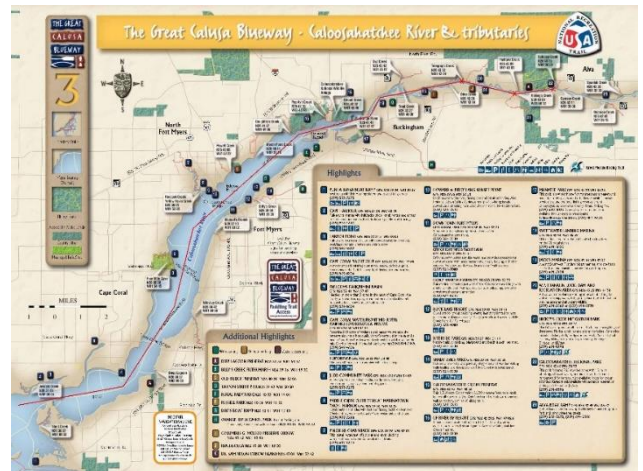
Charleston Park Comm Ctr  
239-728-8895  
FOOD PANTRY  
2<sup>nd</sup> and 4<sup>th</sup> Friday at 10am-1pm

ALVA UMC  
Food Pantry @ Bethany House  
Food Pantry: 9am-12pm 2<sup>nd</sup> & 4<sup>th</sup> Wednesdays  
239-728-2277



Trail information is at  
[www.calusablueway.com](http://www.calusablueway.com) or  
[www.leeparks.org/blueway](http://www.leeparks.org/blueway).

The Great Calusa Blueway Paddling Trail is a 190-mile marked canoe and kayak trail that meanders through the coastal waters and inland tributaries of Lee County, Florida. It attracts everyone from first-time kayakers to advanced paddlers and is home to abundant marine life, shore birds and crustaceans.



**SWFL CRIME STOPPERS**  
**SAY IT HERE!**  
**WHY?**  
 We guarantee anonymity!  
 We pay cash rewards.  
**HOTLINE: 1-800-780-TIPS**  
 CLICK HERE TO SUBMIT A TIP  
DOWNLOAD OUR P3 TIPS MOBILE APP FOR FREE

SWFL Crime Stoppers is NOT a substitute for calling 9-1-1. In the event of an emergency, please call 9-1-1. Those who submit a tip are called "tipsters" and will remain 100% anonymous. No caller ID. No recorded lines. No tracking of phone calls. We want your

information, not your name!

Put simply it is a three-part approach to solving the crime problem. SWFL Crime Stoppers relies on cooperation between our community, the media, and law enforcement to provide a flow of information about crime, wanted fugitives and suspicious activities.



---

## Mission

Volunteer Florida strengthens Florida's communities through national service, fostering volunteerism and leveraging resources.



<https://volunteer.volunteerflorida.org/>

---



**Effective immediately, persons who are experiencing homelessness (living outside, in a car, or other place not meant for human habitation) and seeking permanent housing resources in the Lee County CoC should contact 239-533-7900, and select options 1, 5, then 3, to complete a Coordinated Assessment.**

---



**firehouse**  
community theatre  
INC.



**July 31st**

**6:00pm to 10:00pm**



Snacks available



**241 N. BRIDGE STREET, LABELLE, FL**

Fundraiser for the FCT, Donations encouraged

## Some of our local ALVA area churches:

St. Vincent DePaul's RC Church

13031 Palm Beach Boulevard, Fort Myers, FL 33905

[www.stvincentftmyers.org](http://www.stvincentftmyers.org) 239-693-0818

Alva United Methodist Church

21440 Pearl St. P.O Box 96

Alva, FL 33920

[Alvamc@embarqmail.com](mailto:Alvamc@embarqmail.com)

[www.ouralvachurch.org](http://www.ouralvachurch.org) 239-728-2277

Alva Church of God

21520 Park St, Alva, Florida 33920

239-728-2644

Liberation International Church

Avenue D, Charleston Park

Alva, FL 33920, 239-601-4870

New Hope Faith Temple of Jesus Christ

23210 Avenue D, Charleston Park

Alva, FL, 33920 239-770-4974

Buckingham Presbyterian Church

4241 Buckingham Road

Fort Myers, FL 33905

2219 Joel Blvd, Alva, FL 33920

239 694-2444

First Spanish Assembly of God Church

2219 Joel Blvd

Alva, FL 33920 239-728-5440

Countryside Wesleyan Church

17750 Palm Beach Blvd, Alva, FL 33920

239-368-3270

Calvary Church

19850 Palm Beach Blvd

Alva, FL 33920

[www.calvarychurchswfl.org](http://www.calvarychurchswfl.org) 239-728-5566

First Baptist Church of Alva

2790 Joel Blvd, Alva, FL, 33920

[www.alvabaptist.com](http://www.alvabaptist.com) 239-728-2034

Grace United Methodist Church, Ft Myers Shores

14036 Matanzas Drive, Ft Myers, Florida 33905

[www.egracechurch.com](http://www.egracechurch.com) 239-694-2797

Bethlehem Lutheran Church

14531 Old Olga Road,

Fort Myers, FL 33905

[www.blcefmm.org](http://www.blcefmm.org) 239-694-3878

Olga Baptist Church

2364 South Olga Drive

Fort Myers, FL 33905

[www.olgabaptist.org](http://www.olgabaptist.org) 239-694-2012

[olgabapch1@embarqmail.com](mailto:olgabapch1@embarqmail.com)

# RECOVERY Groups in the Alva Area



**Types of 12 Step Programs in Lee County, FL:** Because Alcoholics Anonymous was exclusive to people who struggled with alcohol addiction, a vast array of other programs were formed to aid and support those in recovery from other addictive disorders. These include the following groups:

Any type of group you do not find listed below may be sought at this website:

<https://www.addicted.org/directory/category/lee-county-3.html>

**Before going to the meeting, confirm time and place by phone**

## ALVA:

**Alva Community Center**, 21471 N River Rd, Alva, FL 33920

-AA Way, 8pm Wednesdays, Big Book, OPEN

**St. Matthews House**, Cypress Creek & North River (rte 78) Roads, Alva

Jill's Place (for women) AND Justin's Place (for men), 239-687-7633 or [intake@stmatthewshouse.org](mailto:intake@stmatthewshouse.org).

<https://stmatthewshouse.org/whatwedo/justinsplace/jills-place-retreat-center>

## FORT MYERS SHORES:

**Grace UMC**, Fort Myers Shores, (239) 694-2797, 4036 Matanzas Dr, Fort Myers:

-AA Open Disc: Mon, Wed, Fri, 12pm, office

-AA men: Mon, 7pm, office

-AA Women: Tues, 7pm, office

-Nar-Anon: Wed, 6:30pm, Family Room

-AA Open Disc: Thu, 8pm, Connections Cafe

-AL Anon: Fri, 12pm, Classroom 2

-AA Open Speaker: Sat, 7pm, Connection Cafe

-NA: Sat, 6:30pm, Classroom 2

-NA Step: Sun, 6pm, Classroom 2

-CHOOSE RECOVERY: 6:00pm, Grace UMC Shores  
Facebook Page LIVE until COVID-19 is under control.

**St. Vincent De Paul RC**, 13031 Palm Beach Blvd, Fort Myers:

-Fort Myers Shores Group OStAH – Tuesday, 8:00 pm

Calvary Assembly of God, 11431 Palm Beach Blvd, Fort Myers:

-Night Owls OD – Saturday, 10:05 pm

## LEHIGH ACRES:

**-AA SUNRISE GROUP - MONDAYS, WEDNESDAYS, FRIDAYS & SATURDAYS 7AM**

705 Leeland Heights Blvd E, Lehigh Acres

(239) 275-5111

**LEHIGH ACRES (cont):**

**-AA MONDAY AT A TIME - MONDAY 6:30PM**

5513 8th St W, Lehigh Acres

(239) 275-5111

**-AA CHAIR'S CHOICE - TUESDAY 6:30PM**

5513 8th St W, Lehigh Acres

(239) 275-5111

**-AA SPIRITUAL SEARCH GROUP - TUESDAY 8PM**

705 Leeland Heights Blvd E, Lehigh Acres

(239) 275-5111

**-AA THIRSTY THURSDAYS - THURSDAY 6:30PM**

5513 8th St W, Lehigh Acres

(239) 275-5111

**-AA HERE AND NOW- SUNDAY 6:30PM**

5513 8th St W, Lehigh Acres, 33971,  
(239) 275-5111

**-NA HOPE WITHOUT DOPE - THURSDAY & SATURDAY 6:30PM**

705 Leland Heights Blvd. E., Lehigh Acres,  
(866) 819-5346

**-AA LEHIGH SUNDAY NIGHT - SUNDAY 8PM**

705 Leeland Heights Blvd E, Lehigh Acres  
(239) 275-5111

**-AA HEARD IT THROUGH THE GRAPEVINE - FRIDAY 6:30PM**

5513 8th St W, Lehigh Acres  
(239) 275-5111

**-AL ANON MOVING FORWARD AFG - MONDAY 10AM**

705 Leeland Heights Blvd E, Lehigh Acres  
(888) 425-2666

**-AA FIRST THINGS FIRST - MON-SUN 7AM**

5513 8th St W, Lehigh Acres  
(239) 275-5111

**-AA NOONERS - MON-SUN 12PM**

705 Leeland Heights Blvd E, Lehigh Acres  
(239) 275-5111

**LABELLE:**

**Good Shepherd Church, (239) 275-5111, 1098 Collingswood Pkwy, Labelle**

-AA-PORT LABELLE GROUP – ODH- SUNDAY 7PM

-MAKING THE EFFORT -OLbHD- MONDAY 7:00 PM

-AS BILL SEES IT- OD- SATURDAY 9:00AM

-WED BIG BOOK GROUP- OBBH- WEDNESDAY NOON

-OPEN DISCUSSION -ODH- FRIDAY 7:00PM

**First Christian Church, Rte 29 & Ford Ave, LaBelle**

-LABELLE GROUP-ODAH- THURSDAY 7:00PM

-STEP GROUP-Cst- TUESDAY 7:00PM

**-AI Anon- AFG - THURSDAY 7PM**

138 Ford Ave, Labelle  
(888) 425-2666

**-AA-THURSDAY 7PM**

138 Ford Ave, Labelle  
(239) 275-5111

**-AA-MEETING AT THE INN - WEDNESDAY 7:15PM**

Port LaBelle Inn, 1568 Oxbow Dr, Labelle  
(239) 275-5111

**NOT TODAY - MONDAY 6:00PM**

133 N Bridge St, Labelle  
(866) 819-5346

**IF you know of any other 12 step or non-12 step recovery group in the Alva area (From Hendry County Line to Fort Myers Shores, north and south of our river) please let me know its name, location and the phone number for information to list here. Thank you! [kendewalt@ontheriver.org](mailto:kendewalt@ontheriver.org)**

# Important Alva Area Lee County Phone Numbers & Websites

(as of August 1, 2020)

Agency	Normal Business	Emergency
<b>ANY immediate life-threatening emergency</b>		<b>911</b>
American Red Cross (Local Chapter)	239-278-3401	239-278-3401
Arson Alert Hotline	800-342-5869	800-342-5869
Blood Donor Centers	888-9-DONATE	
- Lee Memorial Blood Center	239-343-2333	
- Florida's Blood Centers	239-574-3170	
Dept. of Financial Services (Insurance)	239-461-4001	800-22-STORM
Federal Emergency Management Agency	800-621-3362	800-462-7585
Florida Division of Emergency Management	850-413-9969	
Lee County Animal Services	239-533-7387	239-533-7387
Lee County Emergency Info Hotline/United Way	39-433-2000	211
Lee County Emergency Management	239-533-0622	239-533-0622
Lee County Government	239-533-2111	
Lee County Health Department	239-332-9501	239-332-9501
Lee County Public Safety & EMS	239-533-3911	911
Lee County Sheriff's Office 2	39-477-1000	911
Mobile or Manufactured Home Residents	850-617-3004	
National Weather Service/Tampa Bay	813-645-2323	
Poison Information	800-222-1222	800-222-1222
Salvation Army, The	239-278-1551	239-278-1551
Traffic Conditions in Florida (Current)	511	511
United Way of Lee, Hendry, Glades & Okeechobee Counties	239-433-2000	211

### Agency Web Addresses

Community Emergency Response Teams (CERT)	<a href="http://www.ready.gov/citizen-corps">www.ready.gov/citizen-corps</a>
Department of Financial Services (Insurance)	<a href="http://www.myfloridacfo.com">www.myfloridacfo.com</a>
Department of Homeland Security	<a href="http://www.dhs.gov/">www.dhs.gov/</a>
Florida Lightning Safety	<a href="http://www.weather.gov/safety/lightning">www.weather.gov/safety/lightning</a>
Mobile or Manufactured Home Residents	<a href="http://www.flhsmv.gov/mobilehome">www.flhsmv.gov/mobilehome</a>
American Sign Language Preparedness Videos	<a href="http://www.leegov.com/publicsafety/emergencymanagement/plan">www.leegov.com/publicsafety/emergencymanagement/plan</a>
StormReady	<a href="http://www.weather.gov/stormready/">www.weather.gov/stormready/</a>



Cell  
239-340-3904

Office  
239-693-1959

Email  
PattyWalkerREMAX@gmail.com

Web  
GulfCoastLivingPatty.com

Address  
12928 Palm Beach Blvd., Ste A  
Fort Myers, FL 33905

  Each Office Independently Owned & Operated

**WE WRITE ALL HOMES  
INCLUDING OLDER HOMES!!**

**INTEGRITY INSURANCE AGENCY**

128 W. Charlotte Ave, Punta Gorda, FL 33950



Integrity Insurance Agency has been serving all of Florida for over 20 years. The majority of our business is right here in SW Florida. A team of agents, with over 100 years of total experience, we are dedicated to the service we provide to all our clients. We can handle any insurance situation you may have. We provide coverage and service for all items listed below.

Auto, Homeowners, Renters, Condo, Manufactured Homes, Casitas, Flood, Motorcycle, RV, Boats, Golf Carts, General Liability, Commercial Package, Commercial Auto, Workers Comp, Bonds, Liquor Liability, Special Events, Life Insurance, Health Insurance, Long Term Care, Medicare Products, and Professional Liability.

We would be proud to be called your insurance agency. Since we are an Independent Agency we have a number of companies we work with to get you the best coverage for the best price. Call Integrity today and experience the client services we provide. **941-755-1411**. You can go on our website to get more information at [iagencies.com](http://iagencies.com)

Special thanks to all who financially support the mission of  
**ON THE RIVER.**

We especially encourage our readers to patronize the professional  
and community supporters who advertise with us.

# BECOME A PAID VOLUNTEER

at the Dr. Piper Center

AS A SENIOR COMPANION OR FOSTER GRANDPARENT,  
YOU WILL RECEIVE:

Paid stipend of \$3/hr (tax-free)  
Paid holidays, sick leave and vacation leave  
Paid mileage reimbursement of \$.40/mile

Senior Companion Program (SCP)  
Charlene Mitchell, Director  
#239-332-5346 Ext. 103  
charlene@drpipercenter.org

Foster Grandparent Program (FGP)  
Terri Erling, Assistant Director  
#239-332-5346 Ext. 107  
terri@drpipercenter.org



The Senior Companion Program (SCP) and Foster Grandparent Program (FGP) provide volunteer opportunities for people aged 55 and older. SCP volunteers serve frail elderly especially those who are home-bound and living alone. They offer friendship and connection to the outside world; they run errands, and transport them to medical appointments or the grocery store. FGP volunteers serve children with special needs in schools, after school and summer programs. They serve as tutors and mentors to children including those who are victims of abuse, neglect, illiteracy or disability. The emotional benefits of volunteering with us can be profound and lasting. While bringing enrichment to the lives of the seniors and children they serve, Senior Companions and Foster Grandparents often find that their lives are more fulfilling and enhanced.

2607 Dr. Ella Piper Way  
Fort Myers, FL 33916  
www.drpipercenter.org

**DR. PIPER CENTER**  
*Empowering seniors to create community impact.*



**AmeriCorps  
Seniors**

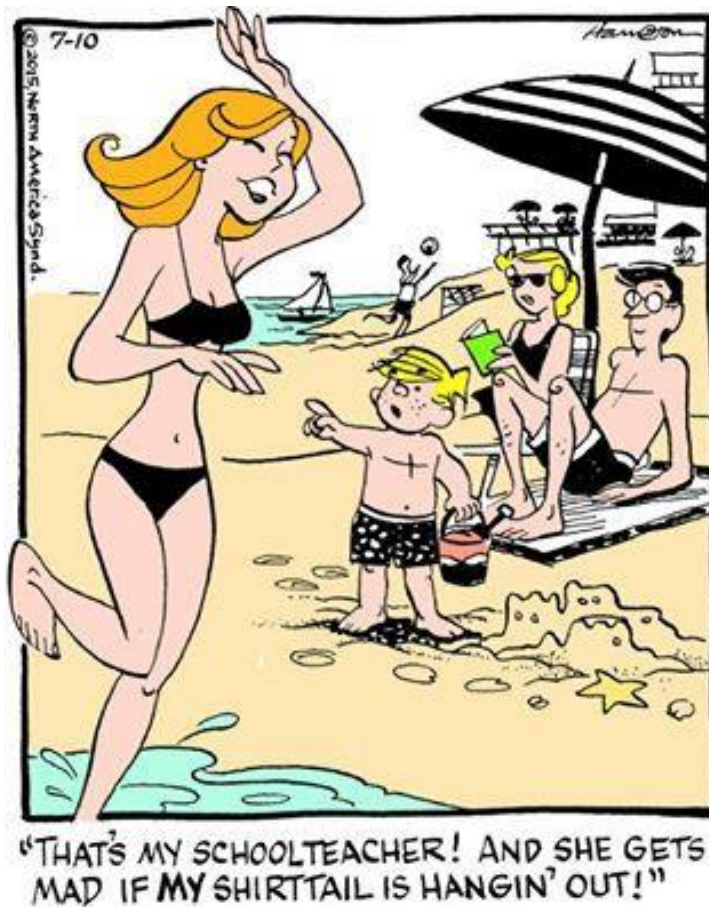




*We love what we do!*  
**LET US SERVE YOU!**



*Kristen Fox Furbay, Realtor®*  
EXPERIENCE REAL ESTATE GROUP  
KRISTEN@ERESUCCESS.COM  
239-229-8807



### ON THE RIVER Alva Area Newsletter Advertising Rates (current since January 17, 2020)

This monthly newsletter is a free to subscriber on-line offering. We are not offering anything in print form at this time. We encourage folk to share it with anyone and in any way they wish, and we place the newsletter in the *Alva Florida Friends and Family*, and the *Know Your Neighbors 239*, Facebook Pages which have over 3000 subscribers, and the *NEXT DOOR ALVA* web page which has over 5,000 subscribers. We have over 1,200 personal email subscribers.

Ads run full across the 9x11" OTR page, then down the fraction of the page you choose.

Advertising rates per month :

1/8th Page... one issue: \$15.00, six issues: \$12.00, twelve issues: \$10.00

¼ Page... one issue: \$25.00, six issues: \$20.00, twelve issues: \$17.00

½ Page... one issue: \$45.00, six issues: \$35.00, twelve issues: \$30.00

Full Page... one issue: \$75.00, six issues: \$60.00, twelve issues: \$50.00

Ads will only appear on pages following all articles and nonprofit promotions are formatted. We can format ads for you with WORD.doc copy and j.peg photos or logos. We can also scan any copy and/or photos you provide to create a single j.peg of your ad.

You will receive a screenshot proof of the ad as soon as we have it formatted for your approval before its issue is published. Lack of response to the proof will be considered acceptance.

**Full payment for all issues contracted for is to be made in full by the 15th of the month preceding the first month in which the ad is to appear, which is also the date the ad copy is to be received. Payments are to be by check (made out to Ramona DeWalt, noted: OTR.**

CONTACT: Ken DeWalt, publisher, with any questions. [kendewalt@ontheriver.org](mailto:kendewalt@ontheriver.org)